

# Ciao Bella

EYE CANDY QUILTS



Palazzo Quilt designed by: **Eye Candy Quilts**  
Quilt Size: **80" x 80"** • Skill Level: **Intermediate**



Free Pattern Download Available

1384 Broadway, 24th Floor, New York, NY 10018  
Tel. (800) 223-5678 • [andoverfabrics.com](http://andoverfabrics.com)

7/15/23

# Palazzo Quilt

Introducing Andover Fabrics new collection: **CIAO BELLA** by Eye Candy Quilts

Quilt designed by Eye Candy Quilts

Quilt finishes 80" x 80"

16 Blocks: 12"

*Say "hello" to this beautiful quilt made with a stunning border print and lush fabrics and colors suggestive of the Italian coast. Pieced borders elegantly frame the star blocks.*

## Cutting Directions

**Note:** Read assembly directions before cutting patches. All measurements are cut sizes and include ¼" seam allowances. A fat ¼ is an 18" x 20"-22" cut. Borders are cut the exact lengths required plus ¼" seam allowances. WOF designates the width of fabric from selvedge (approximately 42" wide).

### Cutting for ONE Block

Green: Cut (2) squares 5" (or 4⅞") for HST (Read Step 3)

Yellow: Cut (1) square 4½"

Orange: Cut (1) square 5¼", cut in half diagonally twice to make 4 quarter-square triangles

Light: Cut (1) square 5¼", cut in half diagonally twice to make 4 quarter-square triangles  
Cut (2) squares 5" (4⅞") for block HST

Dark: Cut (2) squares 5¼", cut in half diagonally twice to make 8 quarter-square triangles

### Fabric A

Fussy-cut (2) top/bottom borders 6½" x 66½" (Read Step 2 before cutting), cut lengthwise

Fussy-cut (2) side borders 6½" x 54½"

Cut (4) squares 5¼", cut in half diagonally twice to make quarter-square triangles for 2 blocks (optional)

Cut (3) squares 3⅜" for outer pieced border (Read Step 1 before cutting)

### Fabric B

Cut (2) t/b borders 2½" x 70½" cut lengthwise for Border #4

Cut (2) side borders 2½" x 66½" for Border #4

Cut (2) t/b borders 2½" x 54½" for Border #2

Cut (2) side borders 2½" x 50½" for Border #2

Cut (4) squares 6½" for Border #3

Cut 5¼" squares, cut in half diagonally twice to make quarter-square triangles for blocks and Border #6 as desired

Cut 5" (4⅞") squares for block HST as desired

### Fabric C

Fussy-cut (2) t/b borders 1½" x 72½" for Border #5, cut lengthwise

Fussy-cut (2) side borders 1½" x 70½" for Border #5

Fussy-cut (2) t/b borders 1½" x 50½" for Border #1

Fussy-cut (2) side borders 1½" x 48½" for Border #1

Cut (6) squares 5¼" cut in half diagonally twice to make quarter-square triangles for blocks

Cut (5) squares 3⅜" for Border #6 (or as many as you desire)

### 4 Green From each

Cut (8) squares 5" (or 4⅞") for block HST

Cut (4) squares 3⅜" for Border #6 (or as many as you desire)

## Fabric Requirements

		Yardage	Fabric
<b>Fabric A</b>	border	2 yards	942-K
<b>Fabric B</b>	border	2¼ yards	946-L
<b>Fabric C</b>	border	2¼ yards	947-K
<b>4 Green</b>	blocks	fat ¼ each	
	942-G	944-G	945-G
			946-G
<b>4 Orange</b>	blocks	fat¼ each	
	943-O	946-O	947-O
			948-O
<b>4 Yellow</b>	blocks	fat ¼ each	
	943-Y	946-Y	947-Y
			948-Y
<b>4 Light</b>	blocks	½ yard each	
	944-L	945-L	947-L
			948-L
<b>4 Dark</b>	blocks	fat¼ each	
	943-K	944-N	945-K
			948-N
<b>Binding</b>		¾ yard	943-K
<b>Backing</b>		7¾ yards	942-G

# Palazzo Quilt

## 4 Orange

From each  
Cut (4) squares 5¼" cut in half diagonally twice to make quarter-square triangles for blocks  
Cut (4 or 5) squares 3⅜" for Border #6 (or as many as you desire)

## 4 Yellow

From each  
Cut (4) squares 4½" for block centers  
Cut (3 or 4) squares 3⅜" for Border #6 (or as many as you desire)

## 4 Light

From each  
Cut (3 or 4) squares 5¼", cut in half diagonally twice to make quarter-square triangles for blocks  
Cut (8) squares 5" (or 4⅞") for block HST  
Cut (36) squares 5¼", cut in half diagonally twice to make quarter-square triangles for Border #6  
Cut (2) squares 3" (or 2⅞"), cut in half diagonally for Border #6

## 4 Dark

From each  
Cut (4 or 6) squares 5¼", cut in half diagonally twice to make quarter-square triangles for 2-3 blocks each

## Binding

Cut (9) strips 2½" x WOF for binding

## Backing

Cut (3) lengths 31" x 90", pieced to fit quilt top  
with overlap on all sides

## Making the Quilt

1. The quilt is made with a planned scrappy look. Note that each of the 16 blocks is made with a dark print for the star points, an orange print for the frame around the yellow center, and green and light corners. Feel free to cut more or less of each fabric to make the blocks and the outer pieced border as you wish.
2. Fussy-cut the Fabric A 6½"-wide strips for Border #3, centering the white flower and having the same amount of light background on each side of the stripe. Likewise, fussy-cut the Fabric C 1½"-wide strips for Borders #1 and #5. Set aside.
3. The blocks are made with half-square triangles (HST). Use your favorite method to make HST that finish 4", or follow these directions. Fabric squares cut 5" will be trimmed after stitching. Cut the squares 4⅞" if you do not wish to trim later. Draw a diagonal line on the wrong side of a light square. With right sides together, position the marked square on top of a green square. Stitch ¼" on each side of the diagonal line (Diagram 1). Cut apart on the drawn line. Press the seam allowance toward the green fabric. Trim the square to 4½" if needed. Make 4 HST alike for each of 16 blocks. Set aside.
4. Refer to the block diagram for color placement. Join 2 dark quarter-square triangles with an orange and a light quarter-square triangle. Make 4 of these units alike. Arrange the HST and the quarter-square units around a center yellow square. Stand back to be certain that the units are rotated correctly. Join the parts into 3 rows, and then join the rows. Make 16 blocks.

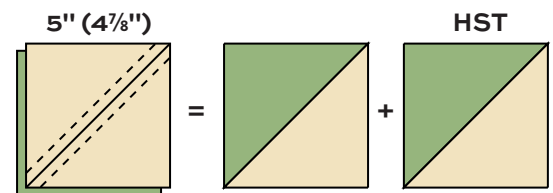
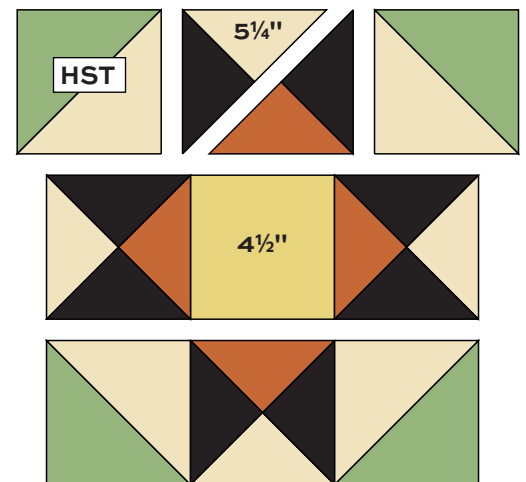


Diagram 1 – Make 4 for each block



Block – Make 16

# Palazzo Quilt

5. Refer to the Quilt Assembly for the next steps. Arrange the blocks to your liking into 4 rows of 4 blocks each. Join the blocks into rows, and then join the rows.

6. Border #1: Sew Fabric C borders to the sides. Sew borders to the top and bottom, referring to the measurements shown on the Quilt Assembly.

7. Border #2: Sew Fabric B borders to the quilt.

8. Border #3: Referring to Diagram 2, draw a diagonal line on the back of Fabric B  $6\frac{1}{2}$ " squares. Position a marked square on one end of the  $66\frac{1}{2}$ " Fabric A border, orienting the white triangle as shown. Stitch on the diagonal line and trim away the excess fabric. Stitch a second square on the opposite end. Repeat to make a second border like this. Sew the shorter border strips to the sides of the quilt. Stitch the pieced borders to the top and bottom.

9. Border #4: Sew appropriate Fabric B borders to the sides and remaining borders to the top and bottom.

10. Border #5: Sew appropriate Fabric C borders to the quilt.

11. Border #6: Referring to the Quilt Assembly, arrange 20 bright  $3\frac{3}{8}$ " squares for the top border and 20 for the bottom border. Arrange 18 squares for each side border. Position light quarter-square triangles between the squares as shown in the Border #6 diagram. Add 3" light half-square triangles at the ends of each border. Stand back to see if you like the distribution of colors. Once you are satisfied, join the patches to make the 4 borders. Sew shorter borders to the sides and longer borders to top and bottom.

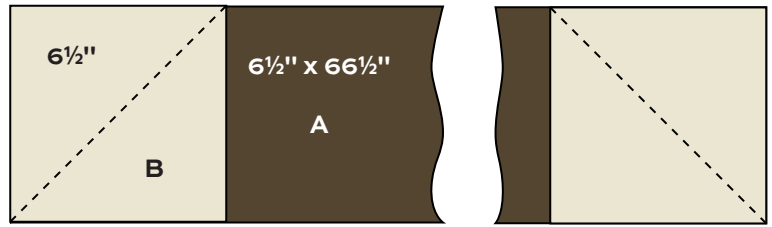
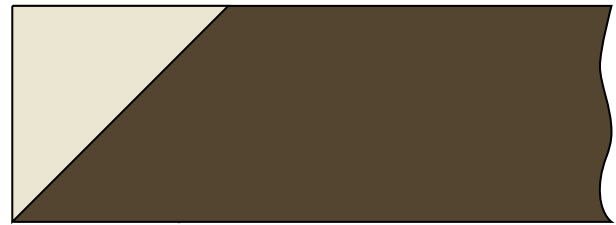
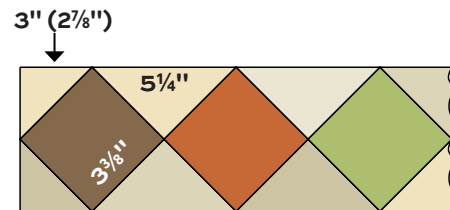


Diagram 2



Border #3

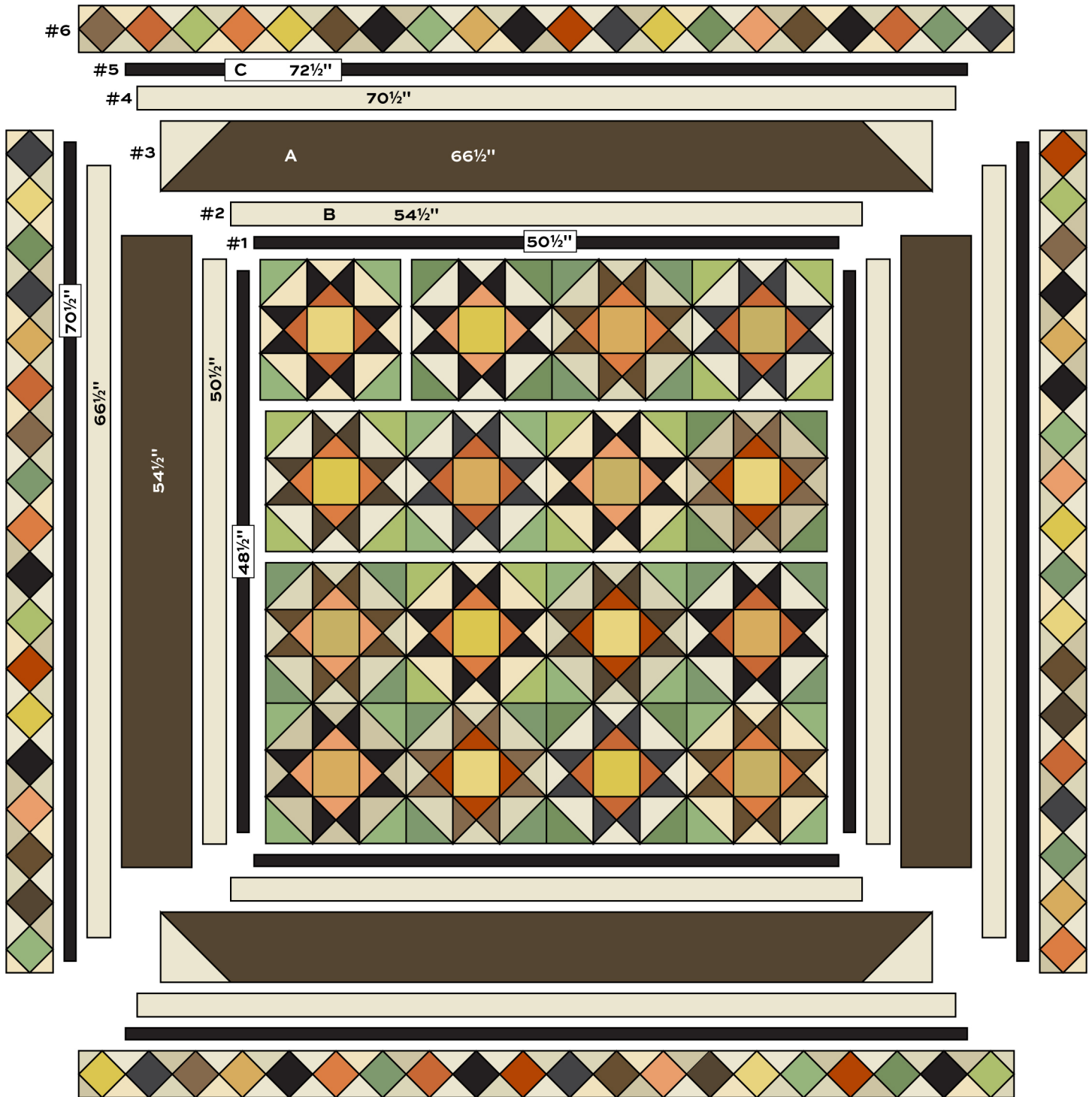


Border #6

## Finishing the Quilt

12. Layer the quilt with batting and backing and baste. Quilt in the ditch around borders and patches. Quilt the center squares in the blocks and the squares in Border #6 as you wish. Bind to finish the quilt.

# Palazzo Quilt



# Ciao Bella EYE CANDY QUILTS



942-G



942-K



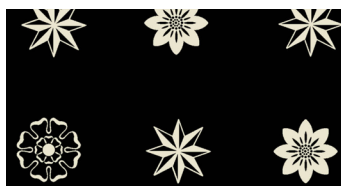
945-G



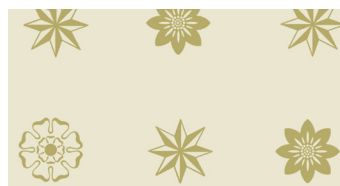
945-K



945-L



947-K



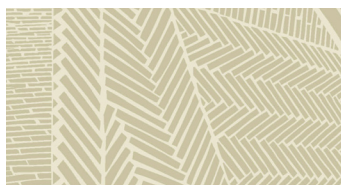
947-L



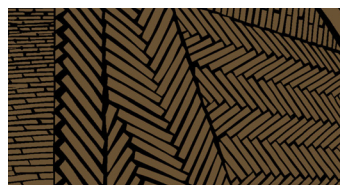
947-O



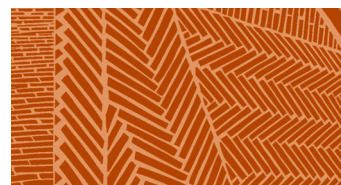
947-Y



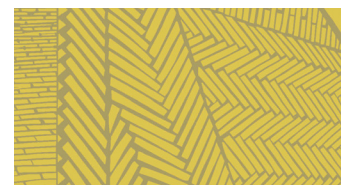
948-L



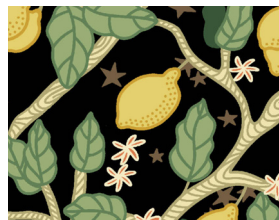
948-N



948-O



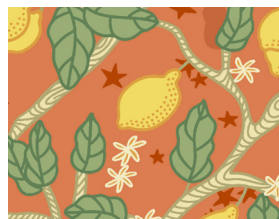
948-Y



943-K



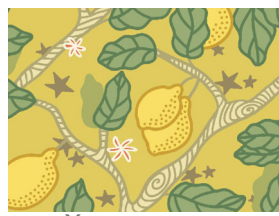
944-G



943-O



944-L



943-Y



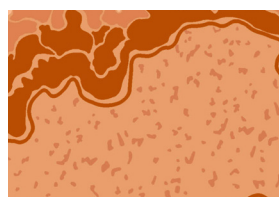
944-N



946-G



946-L



946-O



946-Y

All fabrics are used in quilt pattern. Fabrics shown are 50% of actual size.